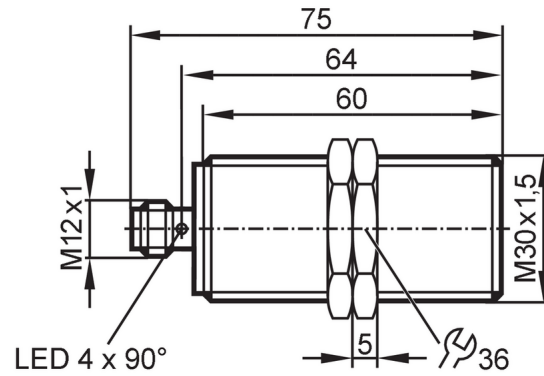


# IIS260



## Inductive sensor

IIA3015BBPKG/US-104



### Product characteristics

|                   |      |                    |
|-------------------|------|--------------------|
| Electrical design |      | PNP                |
| Output function   |      | normally open      |
| Sensing range     | [mm] | 15                 |
| Housing           |      | threaded type      |
| Dimensions        | [mm] | M30 x 1.5 / L = 75 |

### Application

|                 |   |  |
|-----------------|---|--|
| Special feature | Gold-plated contacts; Increased sensing range   |  |
| Application     | Suitable for industrial, mobile, cooling and lubricating applications; Industrial applications / factory automation |  |

### Electrical data

|                             |      |            |
|-----------------------------|------|------------|
| Operating voltage           | [V]  | 10...32 DC |
| Current consumption         | [mA] | < 10       |
| Protection class            |      | III        |
| Reverse polarity protection |      | yes        |

### Outputs

|   |      |               |
|---|------|---------------|
| Electrical design                               |      | PNP           |
| Output function                                 |      | normally open |
| Max. voltage drop switching output DC           | [V]  | 2.5           |
| Permanent current rating of switching output DC | [mA] | 100           |
| Switching frequency DC                          | [Hz] | 100           |
| Short-circuit protection                        |      | yes           |
| Overload protection                             |      | yes           |

### Detection zone

|                         |      |           |
|-------------------------|------|-----------|
| Sensing range           | [mm] | 15        |
| Real sensing range Sr   | [mm] | 15 ± 10 % |
| Operating distance      | [mm] | 0...12.15 |
| Increased sensing range |      | yes       |

### Accuracy / deviations

|                   |   |  |
|-------------------|---|--|
| Correction factor | steel: 1 / stainless steel: 0.7 / brass: 0.5 / aluminium: 0.4 / copper: 0.3 |  |
|-------------------|---|--|

# IIS260



## Inductive sensor

IIA3015BBPKG/US-104

|                    |           |          |
|--------------------|-----------|----------|
| Hysteresis         | [% of Sr] | 3...15   |
| Switch point drift | [% of Sr] | -10...10 |

### Operating conditions

|                     |      |                                    |
|---------------------|------|------------------------------------|
| Ambient temperature | [°C] | -40...85                           |
| Protection          |      | IP 65; IP 66; IP 67; IP 68; IP 69K |

### Tests / approvals

|                             |                                     |  |
|-----------------------------|-------------------------------------|--|
| EMC                         | EN 61000-4-2 ESD                    | 4 kV CD / 8 kV AD  |
|                             | EN 61000-4-3 HF radiated            | 10 V/m   |
|                             | EN 61000-4-4 Burst                  | 2 kV   |
|                             | EN 61000-4-5 Surge                  | 0,5 kV line to line, Ri: 2 Ohm   |
|                             | EN 61000-4-6 HF conducted           | 10 V   |
|                             | signal-to-noise ratio walkie-talkie | 150 MHz (5 W): 0 cm / 450 MHz (5 W): 0 cm / 900 MHz (2 W): 7,5 cm                |
|                             | EN 55011                            | class B  |
| Vibration resistance        | EN 60068-2-6 Fc                     | 20 g (10...3000 Hz) / 50 sweep cycles, 1 octave per minute, in 3 axes            |
| Shock resistance            | EN 60068-2-27 Ea                    | 100 g 11 ms half-sine; 3 shocks each in every direction of the 3 coordinate axes |
| Continuous shock resistance | EN 60068-2-27                       | 40 g 6 ms; 4000 shocks each in every direction of the 3 coordinate axes          |
| Fast temperature change     | EN 60068-2-14 Na                    | TA = -40 °C; TB = 85 °C; t1 = 30 min; t2 = < 10 s; 50 cycles                     |
| Salt spray test             | EN 60068-2-52 Kb                    | severity level 5 (4 test cycles)   |
| MTTF                        | [years]                             | 1134   |
| Embedded software included  |                                     | no   |
| UL approval                 | Ta                                  | -25...70 °C  |
|                             | Enclosure type                      | Type 1   |
|                             | voltage supply                      | Limited Voltage/Current  |
|                             | UL approval no.                     | A001   |
| File number UL              |                                     | E174191  |

### Mechanical data

|                    |      |   |
|--------------------|------|---|
| Weight             | [g]  | 130.5   |
| Housing            |      | threaded type   |
| Mounting           |      | flush mountable   |
| Dimensions         | [mm] | M30 x 1.5 / L = 75  |
| Thread designation |      | M30 x 1.5   |
| Materials          |      | housing: brass white bronze coated; sensing face: PBT orange; LED window: PEI; lock nuts: brass white bronze coated |

### Displays / operating elements

|         |                  |                 |
|---------|------------------|-----------------|
| Display | switching status | 4 x LED, yellow |
|---------|------------------|-----------------|

### Accessories

|                |  |              |
|----------------|--|--------------|
| Items supplied |  | lock nuts: 2 |
|----------------|--|--------------|

### Remarks

|               |  |        |
|---------------|--|--------|
| Pack quantity |  | 1 pcs. |
|---------------|--|--------|

# IIS260



## Inductive sensor

IIA3015BBPKG/US-104

### Electrical connection - plug

Connector: 1 x M12; coding: A; Contacts: 3, gold-plated



### Connection

